

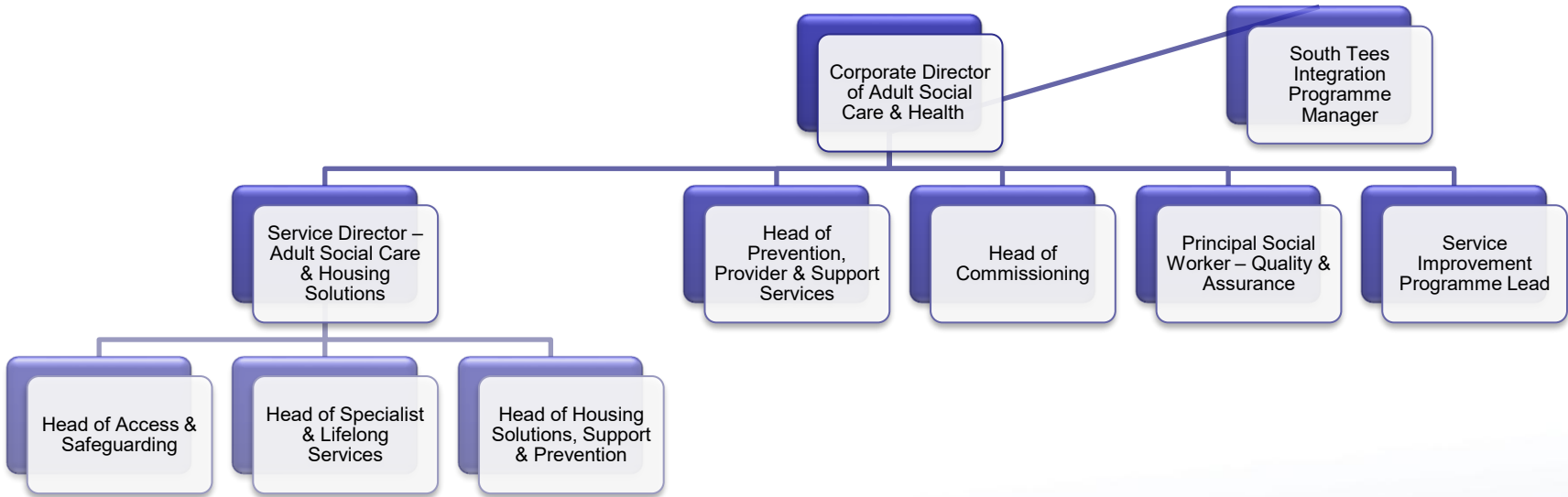
Adult Social Care & Health

Adult Social Care & Health Scrutiny Panel 23rd June 2026

Louise Grabham



Adult Social Care & Health



Priorities 2026/2027

- CQC Inspection framework planning
- Progression of Improvement Plan
- Improving Data Quality
- Working with health partners – changing landscape
- ASC Vision & Strategy / Partnerships
- Academy launch and development

Council Plan priorities

Ref	Council Plan Initiative	Council Plan Priority	Start	Finish	Lead	Outcome
CP-ASC-01	Prevent and / or delay the need for formal service provision through improved access to reliable and timely advice and information, to support independent and healthy living	A healthy place	27/06/2025	31/07/2026	S Hodge	All adults are supported through strength-based practice to live the lives they choose.
CP-ASC-02	Increase pathways offer for homeless households that embody choice; safety and dignity and provide routes into sustainable, long-term accommodation.	A successful and ambitious town	01/04/2024	30/09/2026	R Musicka	We will ensure housing supply meets local demand
TBC	Embed Directorate wide roll out of strength based practice	Safe and resilient communities	01/04/2026	31/03/2027	R Musicka	All adults are supported through strength-based practice to live the lives they choose
TBC	Improve access and support for individuals at risk of homelessness and domestic abuse, through the development of new first contact point and improved advise and information	A successful and ambitious town	01/04/2026	31/01/2027	R Musicka	We will ensure housing supply meets local demand
TBC	Develop the smart house to support technology enabled care delivery, along with a digital house for on-line self-assessments.	Safe and resilient communities	01/08/2026	31/07/2027	C Thompson	All adults are supported through strength-based practice to live the lives they choose
TBC	Develop an autism strategy, and pathways for support	Safe and resilient communities	01/04/2026	30/06/2027	S Didsbury	All adults are supported through strength-based practice to live the lives they choose
TBC	Undertake a full review of reablement to maximise the opportunity to promote independence at all key touchpoints including the front door, review, and hospital discharge.	Safe and resilient communities	01/05/2026	30/06/2027	S Hodge	All adults are supported through strength-based practice to live the lives they choose
TBC	Embed a quality framework across adult social care, ensuring an ethos of co-production	Safe and resilient communities	01/04/2026	30/06/2027	K Grainger	All adults are supported through strength-based practice to live the lives they choose
TBC	Develop the care academy	Safe and resilient communities	01/04/2026	31/03/2027	K Grainger	All adults are supported through strength-based practice to live the lives they choose
TBC	Obtain white Ribbon Accreditation	Safe and resilient communities	01/04/2026	31/03/2027	R Musicka	All adults are supported through strength-based practice to live the lives they choose

Current Projects

- Development of Smart House
- Completion of Conversation Roll Out
- Co-production
- Digital Inclusion
- Support for unpaid carers
- Homeless Strategy & pathway
- PCH Transitions
- DA Re-commissioning – safe accommodation

Challenges

- Finance / Budget Management
- Co-production
- Changing health landscape
- Legislative changes
- Sufficiency / provider markets
- Transitions
- Staffing – Skills / caseloads
- Demand – Waiting lists / Reviews
- Supported Housing needs assessment / strategy

Corporate Performance Measures

- *ASC performance report & clinic – to be reported to scrutiny:*
 - *Vital Signs*
 - *Complaints / Compliments*
 - *FOI / SARS*
 - *Most significant stories of Difference*
 - *Audit Outcomes*

Council Plan Priority	Outcome	KPI Measure	Baseline	2026/7 Target / Ambition	Update frequency
A successful and ambitious town	We will ensure housing supply meets local demand	% reduction of homeless applicants owed a relief duty	64.2%	52%	Monthly
		% increase of individuals / families accessing prevention services	29.6%	40%	Quarterly
		Increase in enquiries resolved at first contact (those enquiring don't progress to an open case)	49%	30%	Quarterly
		Number of households with children in temporary accommodation	31	25	Quarterly
		Number of families in B&B over 6 weeks	0	0	Quarterly
		Number of people sleeping rough on a single night	28	11.3	Quarterly
		Number of people sleeping rough over the month who are long term	31	9	Quarterly
Safe and resilient communities	All adults are supported through strength-based practice to live the lives they choose.	The number of adults aged 18 to 64 whose long-term support needs are met by admission to residential and nursing care homes (per 100,000 population)	34.9	30.9	Annual
		2C - the number of adults aged 65 and over whose long-term support needs are met by admission to residential and nursing care homes (per 100,000 population)	862.2	862.2	Annual
		Repeat safeguarding concerns rate	32%	32%	Quarterly
		Time taken (days) to complete section 42 enquiries	81	28	Quarterly
		Proportion of safeguarding enquiries where the person reports their desired outcomes were achieved	90%	90%	Quarterly
		Number of clients living in Extra Care Housing	106	107.25	Quarterly
		% of people who leave reablement with no ongoing care needs, or reduced package of care		60%	Quarterly
		% of people whose long term care reduces or remains stable at the point of review	83.15%	83.14%	Quarterly

Safe & resilient Communities	We will promote digital inclusion	Number of individuals receiving digital skills support through the digital inclusion programme	105	60	Quarterly
		Number of focus session / engagement session regarding digital skills	118	40	Quarterly
		To maintain a minimum of 14 Digital Champions on the programme	24	14	Quarterly
		% of digital champions actively supporting individuals with digital skills	96%	70%	Quarterly
	We will continue to work with Voluntary and Community groups and individuals to improve the resilience of our communities	Individuals supported at domestic abuse safe accommodation services	664	492.3	Quarterly

Questions?